



Accent Catering:

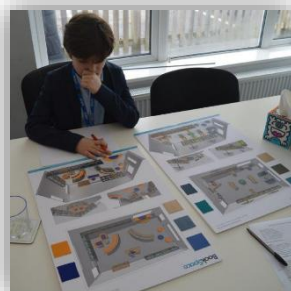
Last Friday, we were excited for the children to explore some new menu foods on the kitchen's taster table. Thank you to the chef team for the delicious and nutritious treats!



Year 6 and Year 3 also enjoyed a hands-on seasonal foods workshop with Accent Catering. The pupils explored fresh, seasonal ingredients and learned how thoughtful food choices support healthy eating and sustainability. It was a fun and engaging experience that connected beautifully with the meals they enjoy every day.



It was a pleasure to have A as our Headteacher for the day. He did a fantastic job monitoring the learning and behaviour in school, reviewed designs for the two library upgrades, and accompanied Year 6 on their trip to Lift Richmond Park.





Reception: People who help us

Reception has had a very exciting week as they enjoyed visits from police officers and firefighters as part of our topic: People who help us. They tried on uniforms, asked lots of questions, and even explored the emergency vehicles - as the lights and sirens blasted, the children were in their element! Thank you to our visitors for making it so much fun. We look forward to a visit from one of our local vets next; stay tuned for updates next week!



Helping Hands:

Congratulations to A in 3G for being a helpful superstar, using her oracy skills to work with her peers in a kind, respectful way. She always listens to instructions and wins the Helping Hands Award this week.



Sports Star:

Well done to J in 1B for being our Sports Star, for running the Phoenix Mile so fairly.

Angels Week:

This week at school, staff have been taking part in 'Angels Week', a week with a particular focus on supporting staff wellbeing. There was a lot of fun to be had with the staff bake-off on Tuesday, 'Secret Angel' day on Wednesday, and we look forward to the staff pub quiz on Friday evening. We are so lucky to have such an incredibly hardworking, committed, and caring staff team (including some exceptional bakers).





East Sheen Primary School

Newsletter Friday 30th January 2026



Scan the QR code for
online safety resources



Invention Convention:



It was fantastic to take our Year 6 pupils to Lift Richmond Park (formerly Richmond Park Academy) this week to hear from the Year 7 pupils about the science and engineering projects they had been involved in. It was wonderful to see so many alumni demonstrating excellent thinking skills, and

inspire our oldest students with their work. A huge thanks to Mr Whelan, Ms Pinner and the whole team at Lift Richmond Park for inviting us to take part.

Family Support Worker:

We are delighted that Belinda will be running another parent coffee morning on 13th February. Please come along to meet Belinda and find out more about how she can offer support to you and your family.

Alternatively, you can book a time to speak with Belinda by contacting her through her email bnorfolk@darell.richmond.sch.uk or via our school office.



School nurse sessions:

Our school nurse, Rhian Betty, will be offering two more sessions this spring term on: Thursday 26th February and Thursday 26th March. To book an appointment, please click on the [link](#).

Young Carers:

The Young Carers Service is for children and young people aged 5 to 17 who live in the London Borough of Richmond upon Thames and help to care for someone in their family. The young person might be supporting a parent, sibling, grandparent or other relative who has a physical or learning disability, long-term illness, mental ill-health or issues with alcohol or substance use.



If you know a young carer, you would benefit from this support, [please click here](#) to find out more.

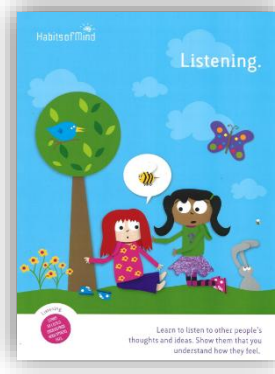
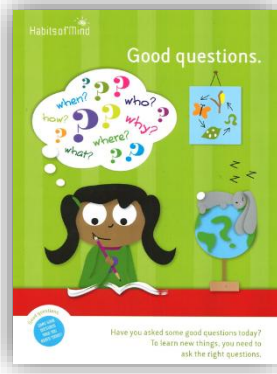


Scan the QR code for
 online safety resources



Thinking Schools

The two Habits of Mind we are focusing on this half term are:



Attendance:

School target: 97%

Last week: 96.9%

Classes above target: 10

RD	98.9%	1B	98.6%	2N	98.6%	3G	96.1%	4D	93.2%	5B	100%	6B	95.6%
RG	96%	1D	96.6%	2S	97.4%	3K	95.4%	4F	97.3%	5C	99.3%	6C	98.9%
RM	95.7%	1L	94.7%	2SB	93%	3S	96.6%	4H	97.7%	5M	99.3%	6T	95.2%

Notices and reminders:

For more information about children's shows at The Hammond Theatre, Hampton School, during February half-term, please [click here](#).

Please remember that that absences should either be recorded on Parentmail or an email sent to attendance@eastsheen.richmond.sch.uk.