



East Sheen Primary School

Headship Headlines

Autumn 2022

In this Headship Headlines we aim to bring you up to date with the current plans and priorities at East Sheen Primary School. As always, the first half term of this academic year has been very busy and so much has taken place already.

We hope that you enjoy the content but any feedback is welcome via info@eastsheen.richmond.sch.uk.

Best wishes,

Debbie Canner and Harry Page

Headteacher and Deputy Headteacher



Welcome to all the new families that have started at the school this term, whether in the new Reception cohort or joining later year groups. Reception have made a great start to their school life and have settled so well into the school community. They have been making very good use of their temporary outdoor area.



New Faces - there are also some new faces amongst the adults in school as we have welcomed a number of new staff members this year.

Siobhan Dell – EYFS Leader
Esme Dickinson – Year 1 teacher
Emily Chaplin – Year 3 teacher
Ali-May Hignell – Year 4 teacher
Courtney Mower – Year 4 teacher
Ali Barnes – Year 5 teacher
Tony Foley- School Caretaker
Sevil Kaplan – EYFS TLSA
Emilia Hunter – Y5 and EYFS TLSA



New SENDCo

Whilst not a new face to the school, Maddie Jensen is our new SENDCo. Maddie is the point of contact in school for parents of children with special educational needs.



Emotional Wellbeing Practitioner

Eleni Tontikidou is our new Emotional Wellbeing Practitioner who works within our school to support children, parents and staff. Look out for upcoming coffee afternoons with Eleni who will be exploring topics such as resilience, emotional regulation, sleep, friendship and anxiety.

Toilets on track!

We are delighted with our new KS2 toilet block. This project has been completed bang on target and the children were very excited to start using them. We now have fresh and modern facilities throughout the school which we know is very important for our pupils.



New Build Update

The start of term saw lots of activity on site as the contractors established the building compound and installed temporary classrooms. The demolition of the old classrooms exposed large lumps of concrete which were unexpected and as such, additional ground investigations have been required.

Unfortunately, this has caused a delay in the start of the build programme on site. The good news is that the modular elements of the classrooms have been built in Wales and are wrapped up and waiting for delivery on site. Our contractors are currently revising the build programme but we anticipate completion by end of Spring term 2023.



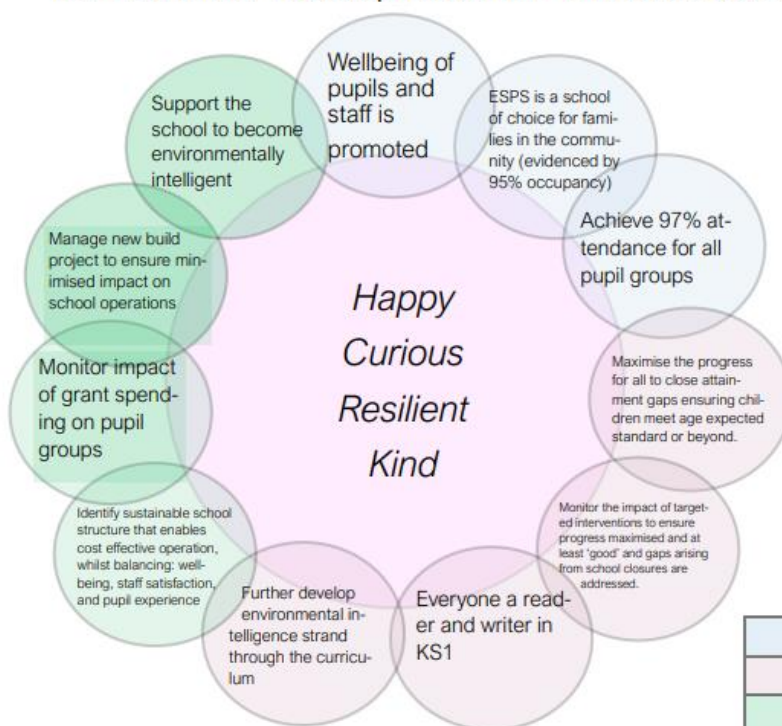
Thank you for your continued patience during this time. The end result will be worth the wait!

School Priorities

At the end of the summer term an evaluation of the year is completed to reflect on successes and identify areas for development as we strive for continuous improvement within school. Each governing committee sets targets for the year ahead – please see summary below.



ESPS School Development Plan Priorities 2022 2023



	CFC Committee
	T&L Committee
	Resources Committee