



# East Sheen Primary School

## Newsletter 9<sup>th</sup> September 2022



### Welcome

It has been lovely to welcome back our families after the summer break and to extend a 'hello' to all the new members of our community. Children have returned to school with enthusiasm for learning, playing with their friends and the school is full of singing, knowledge and thinking skills already. We look forward to an exciting term ahead.



### Build update

Thank you for your patience as we adjust our operations to accommodate the building works. We continue to regularly review how to best use the site and will provide updates from the builders and council managers as we get them.

### Our environmental strategy

The school continues its environmental strategy, embedding environmental issues into the curriculum. Each year group will continue to have guardianship of a particular environmental issue. Last term's art week was themed around the environment and families raised **£360** for Friends of the Earth during the week. This year's poetry week will also be environment-themed.

### Notices

Curriculum evenings begin next week at 7pm in the hall (Year 6 – Monday, Year 4 – Tuesday, Year 5 – Wednesday, Year 2 – Thursday).

[Richmond Fire Station Open Day – 10<sup>th</sup> September](#)

[Barnes Eagles Girls' Football](#)

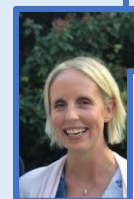
[Musical Theatre Group, All Saints Church](#)

### Safeguarding Team

Safeguarding is everybody's responsibility, but we would like to remind parents and carers of the safeguarding lead team.

Mrs Canner is the school's safeguarding lead and Mr Page is her deputy. Jess Oliver and Emmet Regan are our safeguarding link governors.

In most cases, safeguarding concerns should be raised directly with the child's class teacher. All staff and governors are safeguarding trained.



### Attendance and absence - please continue to help us reach 97%.

School target: 97%

Last year's total: 94.02%

Each week, we will continue to report class attendance totals. Our target remains 97%. We were below this target last year, with covid having a significant impact, but we encourage children to be in school every day on time. The school is not able to authorise holidays in term time.